

**CCNB1 Antibody**  
**Purified Mouse Monoclonal Antibody**  
**Catalog # AO1468a****Specification**

---

**CCNB1 Antibody - Product Information**

Application	WB, IHC, E
Primary Accession	<a href="#">P14635</a>
Reactivity	Human
Host	Mouse
Clonality	Monoclonal
Isotype	IgG1
Calculated MW	60kDa KDa

**Description**

The protein encoded by this gene is a regulatory protein involved in mitosis. The gene product complexes with p34(cdc2) to form the maturation-promoting factor (MPF). Two alternative transcripts have been found, a constitutively expressed transcript and a cell cycle-regulated transcript, that is expressed predominantly during G2/M phase. The different transcripts result from the use of alternate transcription initiation sites. (provided by RefSeq) It has higher expression in tumor tissues .

**Immunogen**

Purified recombinant fragment of human CCNB1 expressed in E. Coli.

**Formulation**

Ascitic fluid containing 0.03% sodium azide.

**CCNB1 Antibody - Additional Information**

**Gene ID** 891

**Other Names**

G2/mitotic-specific cyclin-B1, CCNB1, CCNB

**Dilution**

WB~~1/500 - 1/2000

IHC~~1/200 - 1/1000

E~~N/A

**Storage**

Maintain refrigerated at 2-8°C for up to 6 months. For long term storage store at -20°C in small aliquots to prevent freeze-thaw cycles.

**Precautions**

CCNB1 Antibody is for research use only and not for use in diagnostic or therapeutic procedures.

**CCNB1 Antibody - Protein Information**

**Name** CCNB1

**Synonyms** CCNB

**Function**

Essential for the control of the cell cycle at the G2/M (mitosis) transition.

**Cellular Location**

Cytoplasm. Nucleus. Cytoplasm, cytoskeleton, microtubule organizing center, centrosome

**CCNB1 Antibody - Protocols**

Provided below are standard protocols that you may find useful for product applications.

- [Western Blot](#)
- [Blocking Peptides](#)
- [Dot Blot](#)
- [Immunohistochemistry](#)
- [Immunofluorescence](#)
- [Immunoprecipitation](#)
- [Flow Cytometry](#)
- [Cell Culture](#)

**CCNB1 Antibody - Images**

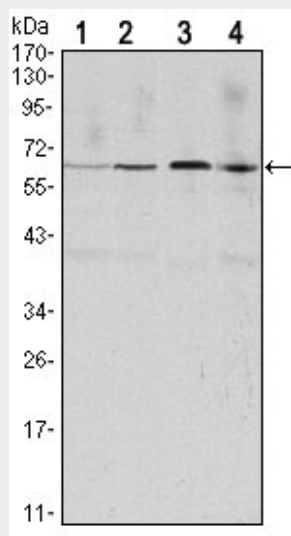


Figure 1: Western blot analysis using CCNB1 mouse mAb against Hela (1), Jurkat (2), K562 (3) and PC-12 (4) cell lysate.

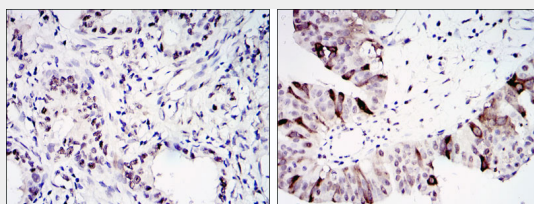


Figure 2: Immunohistochemical analysis of paraffin-embedded lung cancer (left) and ovary tumour tissues (right) using CCNB1 mouse mAb with DAB staining.

**CCNB1 Antibody - References**

1. Oncol Rep. 2009 Oct;22(4):745-55. 2. Cancer Biol Ther. 2009 Dec;8(24):2374-83. 3. Cytokine. 2010 Apr;50(1):42-9.